

String Instrumental Music Program 2011-2012

Dear Student and Parent/Guardian,

Welcome to the Concord String Program! The start of September brings with it an excitement and anticipation generated by enthusiastic, eager, and talented new students beginning to play instruments. Performing music in an orchestra may become one of the most gratifying and memorable experiences of a student's school career. Here are the steps you can take to get your child involved in this exciting and challenging program:

- Please sign and date all material
- Return Instrument Choice/Expectations Form by Friday, June 10th to an envelope outside of your school's music room.
- Over the summer, contact Music & Arts via their website (www.musicarts.com) or by phone (888-731-5396) to rent your child's instrument. Instruments rented from Music & Arts will be at your child's school for their first lesson.

Your child saw a demonstration about musical opportunities available to them through participation in the school orchestra. Attached you will find information about the Concord String Music Program and how your child will benefit from a commitment to the arts.

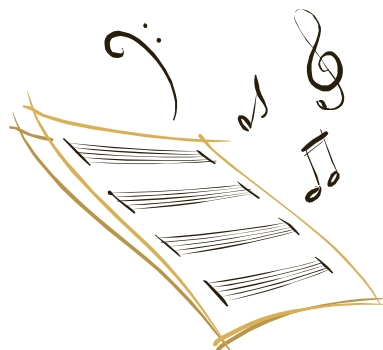
Students participating in their school music program will expand their education in the arts, acquire skills that will assist their academic success, and be offered opportunities for personal and social growth. Following are guidelines for participation in this elementary instrumental music program. Please take the time to read through them as your child will be held to the standards described therein.

Know that we believe deeply in the power and riches that study in instrumental music offers. We look forward to meeting you and your child and making music together.

Sincerely,

Anna Anderson
Orchestra Teacher

<http://cms.colonial.net/teachers/aanderson/>



Instrument Rental Information

Students have seen a great performance and demonstration of the instruments available to them to learn through the Elementary Instrumental Music Program. Your child can make a decision to participate in the school band program and which instrument they would like to learn to play. This is an important decision and one that should not be taken lightly as it is understood the child will continue to play this chosen instrument in subsequent years of instruction.

Help your child to understand the possible long-term implications of such a decision and to weigh it out carefully. Keep in mind that 6th grade students are required to choose orchestra, band, or chorus as an elective; as 6th graders, band students are expected to have completed a full year of playing and instruction.

Instrument

Music & Arts (Newton) is the music rental company for Concord Public Schools. By this designation CPS can assure you that Music & Arts will provide quality rental instruments. Furthermore, having one company to work with make it easier to facilitate fixing an instrument should the need arise. Music & Arts has agreed to work closely with the Instrumental Music Department to provide the best service they can.

Should you choose NOT to rent from Music & Arts you are agreeing to take the instrument rental, maintenance, purchase of lesson book and supplies, and repair into your own hands.



To rent an instrument for your child:

1. go to www.musicarts.com
2. click on "rentals" tab
3. enter your zip code to find your school
4. click on your school's name
5. select the instrument your child would like to play
6. select "Deliver to school" option

1. COMMITMENT

- A. Success at playing an instrument requires perseverance and long-term goal setting. Students who engage themselves in the daily pursuit of excellence will succeed.
- B. **It is essential** that students make a year-long commitment to instrumental music study. As it is said, “Rome wasn’t built in a day.”

2. RESPONSIBILITY

- A. Students need to be responsible for having their instruments, music, wiping cloth, (shoulder rest for violins and violas) and pencil with them at each lesson, and for taking these tools home again.
- B. Students are responsible for coming to their lessons at the correct time.

3. DILIGENCE IN PRACTICE

- A. Students need to practice their instruments and be prepared for their lessons. It is suggested that 4 times per week for 20 minutes will be sufficient to accomplish this. However, certain assignments may require more time.
- B. Students need to show their at home efforts in the form of a practice chart. These must be filled out and signed by a parent or guardian on a weekly basis.(inside the book’s front cover)
 - Studies show that students who are able to develop consistent practice habits are most happy and successful.

4. PUNCTUALITY

- A. Attendance at all rehearsals and performances is mandatory. A student will be excused for illness or other emergencies, in which case the instructor must be notified.
- B. String students meet weekly beginning on September 12th, 2012.
- C. Please mark ALL Concert performance dates and commitments on your calendar. A list can be found in this packet.

5. PRIVATE LESSONS

- A. Though not mandatory it is highly recommended that instrumental students take private lessons. “One on one” lessons will assure a student of making rapid progress and help secure success in the instrumental music program.
- B. We are privileged to have a wonderful lesson program based right here in Concord. The Instrumental Music School of Carlisle and Concord (IMSCC) offers professionally taught lessons on all instruments. This year over 400 elementary, middle, and high school students will enroll in private lessons through this program! Visit <http://ace.colonial.net/imscc>, for more info.

- C. Understand that private lessons, though beneficial, cannot replace the ensemble experience so integral to the fundamentals that this instrumental program is built on.
- D. Help before school is available from me. Parents should email me to set up a session. Also, a high school mentor can be arranged for a short time. This is not a private lesson, but a tutoring session.

6. BEHAVIOR EXPECTATIONS

Be advised that a continued lack of achieving the minimum practice standard is detrimental to an individual student's progress in class and class achievement as a whole. The time in learning that has been provided for the instrumental music program is very valuable and the instrumental music teachers would appreciate parents reinforcing this message to their children.

Consequences for inappropriate behavior and/or effort include:

1. Students asked to put away instrument for remainder of the lesson
2. Communication with parent
3. Dismissal from class

7. PARENTAL INVOLVEMENT

Parents and Guardians are an essential part of the Instrumental Lesson Program. You are our eyes and ears at home – helping attain a quiet area to practice, structuring practice routines, listening to practice sessions, and offering encouragement helps contribute to your child's success at playing a musical instrument.

Please make sure your child's place to practice is:

1. away from distractions
2. well-lit
3. equipped with a music stand (and a chair for cellists).

8. SCHOOL OWNED INSTRUMENTS

If you are interested in playing the string bass, the schools have one ready to use and free of charge. One student will be selected with the help of the music teacher from the pool of candidates. The lucky student **MUST** commit to play it for the entire year.





9. FESTIVAL ORCHESTRA

The Massachusetts Instrumental and Choral Conductor's Association (MICCA) holds a concert band festival at the beginning of April each year. Bands from around the state visit one of several sites to perform 3 challenging works in front of a panel of judges who offer suggestions for improvement. Plaque is awarded based on the musicality of the group. A notice will go home inviting your child to participate if he or she has mastered the beginning concepts and is able to perform "Twinkle Twinkle" well. For planning purposes, rehearsals are on early-release Tuesdays at Sanborn at 2:15-3:15pm from January through the end of March. Watch for information at the beginning of December about Festival Orchestra!

10. IF THE STUDENT HAS ALREADY MASTERED SOME BASIC SKILLS

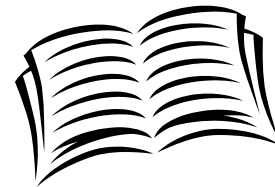
If your child has already been playing for some time and has achieved some proficiency on the string instrument (fluent music reading, knowledge of the entire first position, slurs) he or she should play for me to determine eligibility to participate in the 5th grade orchestra, with the classroom teacher's support.

11. END OF THE YEAR CONCERT on May 2nd, 2012 at Sanborn School's gym. "The Talking Violin Concert" with Julie L. Lieberman. This is a special program, sponsored by a grant from the Concord Ed. Fund. The workshops will last from 3:30pm to 7pm, with a dinner break. The concert will begin at 7pm. Detailed information to follow in the winter. If you would like to help out with this, please contact me.

Students were shown a demonstration of each instrument offered through the Concord String Music Program on May 24th. (Violin/Viola/Cello/Double Bass, although we have not included the harp in the school before, students studying this instrument privately will be accepted into the program. Thoreau students may apply for the instrument as it will be piloted at that school. Students must have studied the piano privately for at least a year and read treble and bass clefs) Your child can then make a decision to participate in the school lesson program and which instrument they would like to learn to play. This is an important decision and one that should not be taken lightly as it is understood the child will continue to play this chosen instrument for the entire school year and hopefully elect to pursue it in subsequent years of instruction as they continue their education through high school. Please help your child understand the possible long-term implications of such a decision and to weigh it out carefully.

The first demo lesson (to be attended with a parent) will be held in September. More info to follow. Please come with your child to learn about the program and to pick their instrument up.

LESSON BOOK



Music & Arts will supply lesson books for rented instruments

ALL instrumental students MUST HAVE the appropriate lesson book:

*Essential Elements 2000 (**Please make sure it's the correct edition, brown color)
Harpists should get the violin book.*

*It is highly recommended that student instruments be covered
by insurance coverage (offered by rental companies).*

Please direct any questions that you may have to the instrumental music teacher:

Anna Anderson – aanderson@colonial.net

Parent Checklist

- Commit to the program for the entire school year*
- Email Mrs. Anderson to sign up for newsletter/reminders
(aanderson@colonial.net)*

- Come to the demo lesson at Sanborn in September with your child. You
will also be able to pick up your instrument then.*

- Purchase lesson book/rosin/shoulder rest for violins/violas*
- Review and understand practice responsibilities with student (80
min/week)*
- Contact the store for instrument rental*



- ☐ *Mark your calendars for the end of the year “The Talking Violin Concert”
On May 2nd, 3:30 to 8:20pm (a grade 4-12 string evening)*

There will also be an optional evening of solo playing, The String Coffee House on January 19th at 7pm at Peabody

Instrumental Lesson Program Expectations Form

Student Name (print) _____

School _____ Classroom Teacher _____

Instrument Choice (circle one)

Orchestra

Violin

Viola

Cello

Double Bass

Harp(Thoreau)

****PLEASE EMAIL AANDERSON@COLONIAL.NET TO GET SIGNED UP FOR THE MONTHLY EMAILS AND REMINDERS.**

I wish to have my child participate in the Instrumental Lesson Program and I understand that it is my responsibility to provide an instrument. I also acknowledge that all arrangements for rental or purchase of an instrument are made directly with the music company.

Parent/Guardian Signature _____

We have read all of the Elementary Instrumental Music Program policies and expectations and have discussed them. We agree with and support these policies and will work together with the Elementary Instrumental Music teachers to attain the highest standard of excellence.

Student Signature _____

Parent Signature _____ date _____

Best email address for correspondence _____

___ Please check here if you (the parent/guardian) play an instrument. _____
(which)

* Please return to the envelope outside the music room by June 17th.